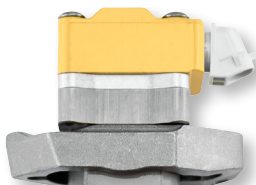


7.3L POWER STROKE

Injectors

AP63800AA



HEUI Injector*

OEM Part Numbers: F81Z9E527DRM, F4TZ9VE527AARM, F7TZ9E527ARM

Year Range:

1994–1998

1994–1996

1994–1996

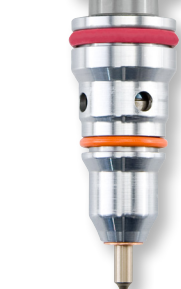
Application:

F Series

F Series (California)

E Series

AP63801AB



HEUI Injector*

OEM Part Numbers: F81Z9E527BRM, F7TZ9E527BRM, F61Z9VE527BRM

Notes: Prime (Split Shot) Injector. Engines built BEFORE 12/07/1998.

Year Range:

1999

1997–1999

1997–1998

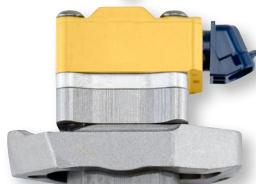
Application:

F Series

F Series (California)

E Series

AP63803AD



HEUI Injector*

OEM Part Numbers: F81Z9E527CRM, 5C3Z9VE527BRM

Notes: Prime (Split Shot) Injector. Engines built AFTER 12/07/1998.

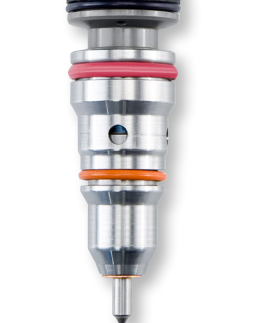
Year Range:

1999–2003

Application:

F Series, E Series

AP63804AE



HEUI Injector*

OEM Part Numbers: F81Z9E527EARM, XC3Z9E527AARM, F61Z9VE527ERM, 5C3Z9VE527ARM

Notes: Long Lead (LL or blue harness connector) Injector. Engines built AFTER 12/07/1998. Used in #8 cylinder to eliminate "cackle" (Per Ford Bulletins 00–10–1, 00–22–1, and 01–14–6).

Year Range:

1999–2003

1999–2003

Application:

F Series

E Series

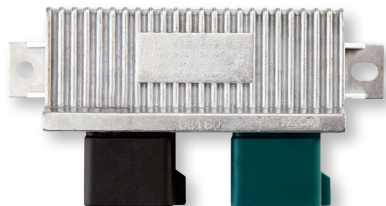
ESN Range:

661,496 to 896,812

661,974 to 896,812

Modules

AP63406



Glow Plug Control Module (GPCM)

OEM Part Numbers: YC3Z12B533AA, DY876

Notes: Field data indicates Glow Plug Control Modules (GPCMs) were used on some 2000 to 2003 vehicles.

Year Range:

2000–2003

Application:

F–250 / F–550, Excursion, E Series

**Indicates products with a core charge.*

7.3L POWER STROKE

Modules *continued*

Remanufactured Injector Drive Module (IDM)*

OEM Part Number: F7TZ12B599AC

Year Range:
1994½–1998

Application:
F Series, E Series

AP65110

Remanufactured Injector Drive Module (IDM)*

OEM Part Numbers: XC3Z12B599AA, 2C2Z12B599A

Year Range:
1999–2003

Application:
F Series, Excursion, E Series

AP65120



Fuel System Components

Fuel Transfer Pump–Mechanical

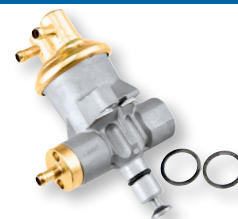
OEM Part Numbers: F6TZ9350A, YC3Z9350CA

Notes: Includes two banjo gaskets.

Year Range:
1994–1998

Application:
F Series, E Series

APM61067



Fuel Transfer Pump–Electronic (Bosch)

OEM Part Numbers: F81Z9C407AC, 0 580 464 074

Year Range:
1999–2003

Application:
F Series, Excursion, E Series

69136



Fuel Filter Heater Element

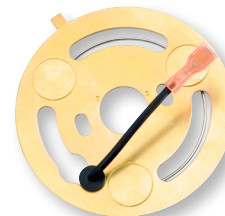
OEM Part Number: F5TZ9J294A

Notes: Field data indicates both elements (AP63409 and AP63410) were used for MY 1998 vehicles. Be sure to verify which element is in place.

Year Range:
1994–1998

Application:
F Series, E Series

AP63409



Fuel Filter Heater Element

OEM Part Number: F81Z9J294AA

Notes: Field data indicates both elements (AP63409 and AP63410) were used for MY 1998 vehicles. Be sure to verify which element is in place.

Year Range:
1998–2003

Application:
F Series, Excursion, E Series

AP63410



7.3L POWER STROKE

Engine Components

AP63404



Exhaust Back Pressure (EBP) Tube

OEM Part Number: 1C3Z9D477AA

Year Range:
1999½–2003

Application:
F Series, Excursion, E Series

AP63411



HEUI Injector Sleeve-Brass

OEM Part Number: F4TZ9F538A

Year Range:
1994–2003

Application:
F Series, Excursion, E Series

AP63452



Engine Oil Cooler

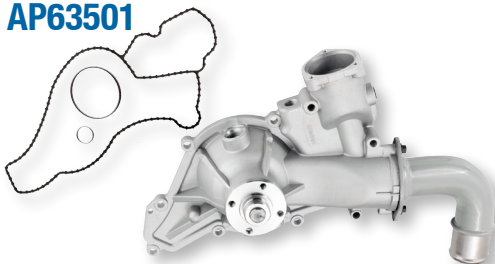
OEM Part Number: 1C3Z6A642AA

Notes: Requires AP0004 Engine Oil Cooler O-ring and Gasket Kit for installation.

Year Range:
1994–2003

Application:
F Series, Excursion, E Series

AP63501



Water Pump

OEM Part Numbers: F81Z8501CRM / ARM, F6TZ8501AARM, 2C3Z8V501BA

Notes: Includes mounting gasket. May require heater hose adapter fitting for installation. See Technical Bulletin APTB 04/06.

Year Range:
1994–1995
1996–2003

Application:
F Series, E Series
F Series, Excursion, E Series

HP004X



Remanufactured High-Pressure Oil Pump (Bosch)

OEM Part Number: F4TZ9A543BRM

Notes: Includes mounting gasket.

Year Range:
1994–1995

Application:
F Series, E Series

HP005X



Remanufactured High-Pressure Oil Pump (Bosch)

OEM Part Number: F6TZ9A543ARM

Notes: Includes mounting gasket.

Year Range:
1996–1997

Application:
F Series, E Series

7.3L POWER STROKE

Engine Components *continued*

Remanufactured High-Pressure Oil Pump (Bosch)

OEM Part Number: F81Z9A543BRM

Notes: Includes mounting gasket.

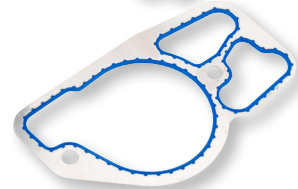
Year Range:
1998–1999½

Application:
F Series, E Series

HP007X



HP008X



Remanufactured High-Pressure Oil Pump (Bosch)

OEM Part Number: F81Z9A543CRM

Notes: Includes mounting gasket.

Year Range:
1999½–2003

Application:
F Series, Excursion, E Series

Sensors

Ambient Air Temperature (AAT) Sensor

OEM Part Numbers: 9U2Z12A648A, DY1145

Year Range:
1994–1998

Application:
F Series



AP63490

Camshaft Position (CMP) Sensor

OEM Part Numbers: F4TZ12K073C, DU87

Year Range:
1994–1996

Application:
F Series



AP63491



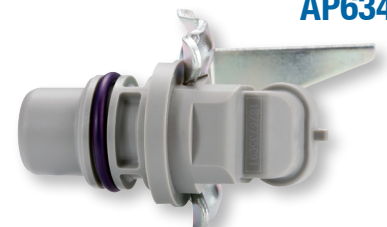
Camshaft Position (CMP) Sensor

OEM Part Numbers: F7TZ12K073A / B

Year Range:
1997–2003
2000–2003
2000–2003
1997–2003

Application:
F–250 / F–550
F–650 / F–750
Excursion
E Series

ESN Range:
375,549 to 2,030,402
1,026,248 to End
896,813 to 2,030,402
375,549 to 2,030,402

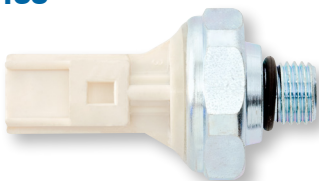


AP63400

7.3L POWER STROKE

Sensors *continued*

AP63435



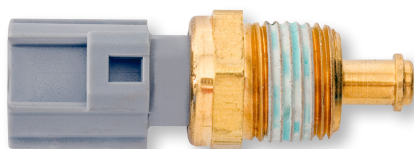
Engine Oil Pressure (EOP) Sensor

OEM Part Numbers: F81Z9278AA, SW5267

Year Range:
1994–2003

Application:
F Series, Excursion, E Series

AP63436



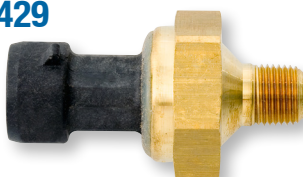
Engine Oil Temperature (EOT) Sensor

OEM Part Numbers: F5AZ12A648AB, 3F1Z12A648A, DY961, DY1144

Year Range:
1994–2003

Application:
F Series, Excursion, E Series

AP63429



Pressure Sensor

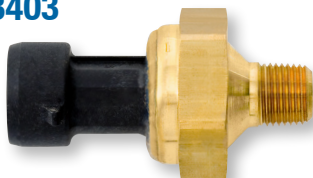
OEM Part Numbers: 1C3Z9J460AA, DPFE1

Notes: Exhaust Back Pressure (EBP).

Year Range:
1994–1997

Application:
F Series, E Series

AP63403



Exhaust Back Pressure (EBP) Sensor

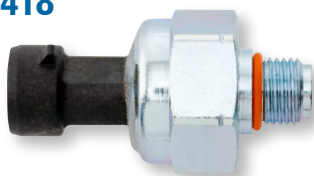
OEM Part Numbers: 4C3Z9J460A, DPFE3

Year Range:
1997–2002
2000–2002
2000–2002
1995–2003

Application:
F–250 / F–550
F–650 / F–750
Excursion
E Series

ESN Range:
501 to 2,030,402
1,026,248 to End
896,813 to 2,030,402
35,651 to 2,030,402

AP63418



Injection Control Pressure (ICP) Sensor

OEM Part Number: F6TZ9F838A

Year Range:
1999–2002
2000–2002
2000–2002
1995–2003

Application:
F–250 / F–550
F–650 / F–750
Excursion
E Series

ESN Range:
661,974 to 2,030,402
1,026,248 to End
896,813 to 2,030,402
35,651 to 2,030,402

AP63489



Manifold Absolute Pressure (MAP) Sensor

OEM Part Numbers: F4TZ9F479A, DY708

Year Range:
1994–1998

Application:
F Series, E Series

NEW

7.3L POWER STROKE

Sensors *continued*

Manifold Absolute Pressure (MAP) Sensor

OEM Part Numbers: F8UZ9F479BA, CX1679

Year Range:
1998–2003

Application:
F Series, Excursion



AP63492



Actuators

Injection Pressure Regulator (IPR) Valve

OEM Part Numbers: F4TZ9C968C / CB, 2C3Z9C968BA

Notes: With edge filter.

Year Range:
1994–1995½

Application:
F Series, E Series

ESN Range:
0 to 187,099



AP63401

Injection Pressure Regulator (IPR) Valve

OEM Part Numbers: F81Z9C968AA / AB

Notes: Without edge filter.

Year Range:
1995½–2003

Application:
F Series, Excursion, E Series

ESN Range:
187,100 to End



AP63402

Glow Plug Relay

OEM Part Numbers: F81Z12B533AC, F7TZ12B533A / CA, DY861, RY525

Year Range:
1994–2003
2000–2002
2000–2002
1995–2003

Application:
F–250 / F–550
F–650 / F–750
Excursion
E Series



AP63405

Electrical Harness and Repair

Valve Cover Harness Connector Repair Kit

Notes: Repairs AP0016 Valve Cover Gasket Connector Pigtail.

Year Range:
1998–2003

Application:
F Series, Excursion, E Series



AP0009

7.3L POWER STROKE

Electrical Harness and Repair continued

AP0010



Valve Cover Harness Connector Repair Kit

Notes: Repairs AP0015 Valve Cover Gasket Connector Pigtail.

Year Range:
1994–1997

Application:
F Series, E Series

AP0015

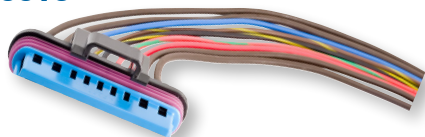


Valve Cover Gasket Connector Pigtail

Year Range:
1994–1997

Application:
F Series, E Series

AP0016



Valve Cover Gasket Connector Pigtail

Year Range:
1998–2003

Application:
F Series, Excursion, E Series

AP0021



3 Wire Pigtail

OEM Part Number: 5C3Z12224A

Notes: Fits AP63418 Injection Control Pressure (ICP) Sensor as well as AP63403 and AP63429 Exhaust Back Pressure (EBP) Sensors.

Year Range:
1994–2003

Application:
F Series, Excursion, E Series

AP0068



2 Wire Pigtail

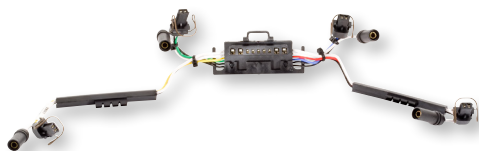
Notes: Fits AP63401 and AP63402 Injection Pressure Regulator (IPR) Valves and all HEUI A Injectors.

Year Range:
1994–1995½
1995½–2003

Application:
F Series, E Series
F Series, Excursion, E Series

ESN Range:
0 to 187,099
187,100 to End

AP63413



Internal Injector Harness

OEM Part Number: F81Z9D930AB

Notes: Use with AP0014 Valve Cover Gasket Kit.

Year Range:
1998–2003

Application:
F Series, Excursion, E Series

7.3L POWER STROKE

Electrical Harness and Repair *continued*

Internal Injector Harness

OEM Part Number: F4TZ9D930K

Notes: Use with AP0013 Valve Cover Gasket Kit.

Year Range:
1994–1997

Application:
F Series, E Series

AP63414



Seal and Gasket Kits

HEUI Injector Seal Kit

OEM Part Number: F8TZ9229AA

Year Range:
1994–2003

Application:
F Series, Excursion, E Series

AP0001



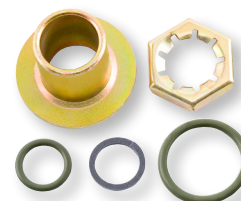
Injection Pressure Regulator (IPR) Valve Seal Kit

OEM Part Number: F6TZ9C977AN

Year Range:
1994–2003

Application:
F Series, Excursion, E Series

AP0003



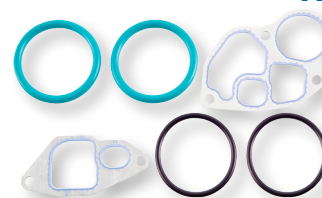
Engine Oil Cooler O-ring and Gasket Kit

OEM Part Numbers: F4TZ6A636A, F7TZ6A636AAA, 1C3Z6C610BA, 1C3Z6K649BA

Year Range:
1994–2003

Application:
F Series, Excursion, E Series

AP0004



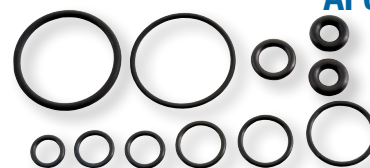
Fuel Filter Drain Valve Kit

OEM Part Numbers: F6TZ9157BA and F5TZ9151A

Year Range:
1994–1997

Application:
F Series, E Series

AP0008



Fuel Filter Drain Valve Kit

OEM Part Number: F81Z9C065AA

Notes: Includes grommets.

Year Range:
1998–2003

Application:
F Series, Excursion, E Series

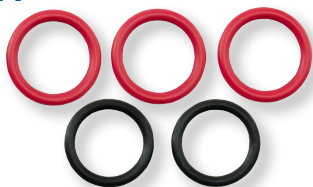
AP0007



7.3L POWER STROKE

Seal and Gasket Kits *continued*

AP0011



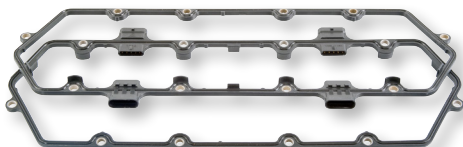
High-Pressure Oil Pump Seal Kit

OEM Part Number: 2C3Z9G804AB

Year Range:
1994–2003

Application:
F Series, Excursion, E Series

AP0013



Valve Cover Gasket Kit

OEM Part Number: F4TZ6584A

Notes: Use with AP63414 Internal Injector Harness. Package of two.

Year Range:
1994–1997

Application:
F Series, E Series

AP0014



Valve Cover Gasket Kit

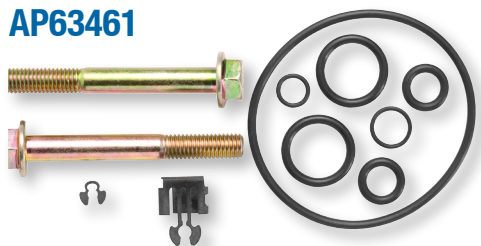
OEM Part Number: F81Z6584AA

Notes: Use with AP63413 Internal Injector Harness. Package of two.

Year Range:
1998–2003

Application:
F Series, Excursion, E Series

AP63461



Turbo Installation Kit

OEM Part Number: F81Z6N653BA

Year Range:
1999–2003

Application:
F Series, Excursion, E Series

Engine Accessories

AP63421



Belt Tensioner

OEM Part Numbers: F8UZ6B209CA, BT50

Year Range:
1998–2003
2000–2003

Application:
F Series, E Series
Excursion

7.3L POWER STROKE

Engine Accessories *continued*

Vacuum Pump—Electronic

OEM Part Numbers: 6C3Z2A451A, 6C3A2A451BA, F81Z2A451BA, 4C3Z2A451BA, BRPV-7

Year Range:
1998–2003

Application:
F Series, Excursion, E Series



AP63433

Vacuum Pump—Mechanical

OEM Part Numbers: F6TZ2A451AA, BRPV-6

Year Range:
1998–2002
2000–2002
1996–2002
2002

Application:
F-250 / F-450
F-550
E-350
E-450 / E-550



AP63700

Vacuum Pump—Mechanical

OEM Part Numbers: F4TZ2A451A, BRPV-5

Year Range:
1994–1998

Application:
F Series, E Series



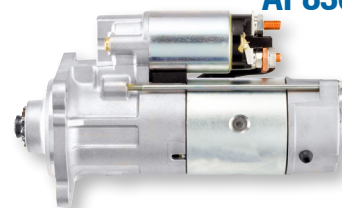
AP63724

Starter

OEM Part Numbers: F4TZ11002A, F5TU11000AA / AB / AD

Year Range:
1994–2003

Application:
F Series, Excursion, E Series



AP83000

Filters

Spin-on Fuel Filter/Water Separator (Racor)

OEM Part Number: FD3375

Notes: Only fits 7.3L IDI Diesel.

Year Range:
1988–1994

Application:
F Series, E Series



PFF829B



Fuel Filter Bowl/Drain Assembly (Racor)

Notes: Use with PFF829B Spin-on Fuel Filter/Water Separator (Racor). Only fits 7.3L IDI Diesel.

Year Range:
1988–1994

Application:
F Series, E Series



PFRK20567



7.3L POWER STROKE

Filters continued

PFF4595



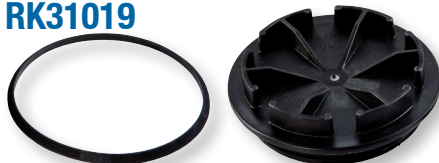
Fuel Filter Element Service Kit (Racor)

OEM Part Number: FD4495

Year Range:
1994–1998

Application:
F Series, E Series

RK31019



Fuel Filter Top Cover (Racor)

OEM Part Number: F5TZ9G270A

Year Range:
1994–1998

Application:
F Series, E Series

PFF4596



Fuel Filter Element Service Kit (Racor)

OEM Part Number: FD4596

Year Range:
1998½–2003

Application:
F Series, Excursion, E Series

RK31449



Fuel Filter Top Cover (Racor)

Year Range:
1998½–2003

Application:
F Series, Excursion, E Series

AP63424



Fuel Filter Housing Assembly

OEM Part Numbers: F6TZ9155AB, FG1054

Notes: Includes PFF4595 Fuel Filter Element Service Kit (Racor), RK31019 Fuel Filter Top Cover (Racor), and AP63409 Fuel Filter Heater Element. Field data indicates both housings (AP63424 and AP63425) were used for MY 1998 vehicles. Be sure to verify which housing is in place.

Year Range:
1994–1998

Application:
F Series

AP63425



Fuel Filter Housing Assembly

OEM Part Numbers: F81Z9155AC, FG1057

Notes: Includes PFF4596 Fuel Filter Element Service Kit (Racor), RK31449 Fuel Filter Top Cover (Racor), and AP63410 Fuel Filter Heater Element. Field data indicates both housings (AP63424 and AP63425) were used for MY 1998 vehicles. Be sure to verify which housing is in place.

Year Range:
1998½–2003

Application:
F Series, Excursion, E Series

6.0L and 4.5L POWER STROKE

Injectors

Remanufactured G2.8 Injector*

OEM Part Numbers: 3C3Z9E527EBRM / EARM / AE / ABRM / ECRM

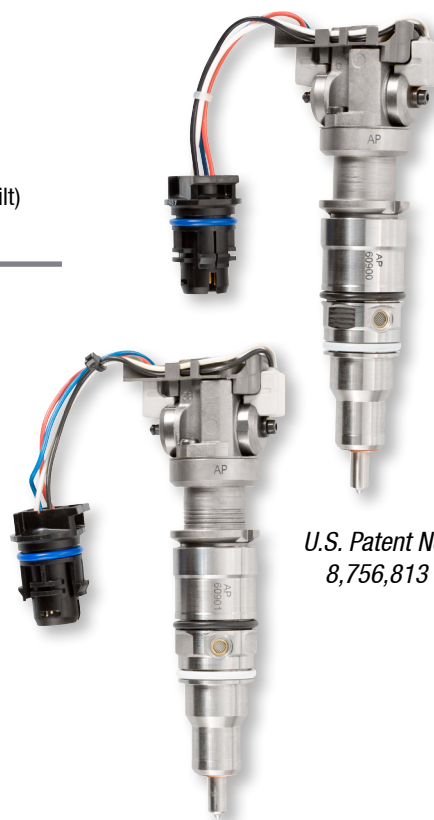
Notes: Engines built BEFORE 09/22/2003.

Year Range:
 2003–09/21/2003 F–250 / F–550, Excursion
 2003–09/21/2003 F–250 / F–550, Excursion
 2003–09/21/2003 F–650 / F–750

ESN Range:
 0 to 137,745 (Alabama built)
 6,000,000 to 6,155,636 (Indiana built)
 0 to 112,360 (Alabama built)

AP60900

AP60901



U.S. Patent No.
8,756,813

Remanufactured G2.8 Injector*

OEM Part Numbers: 4C3Z9E527AA / BRM

Notes: Engines built ON or AFTER 09/22/2003.

Year Range:
 09/22/2003–2007 F–250 / F–550, Excursion
 2005–2007 F–650 / F–750
 2004–2010 E Series
 2006–2010 4.5L LCF

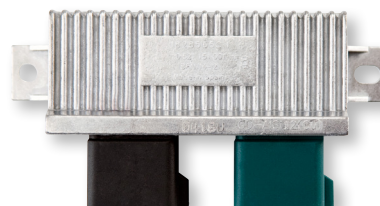
Modules

Glow Plug Control Module (GPCM)

OEM Part Numbers: YC3Z12B533AA, DY876

Year Range:
 2003–2007 F–250 / F–550, Excursion
 2004–2010 E Series

AP63406



*Indicates products with a core charge.

6.0L and 4.5L POWER STROKE

Modules *continued*

AP65122



Remanufactured Fuel Injection Control Module (FICM)*

OEM Part Numbers: 4C3Z12B599ABRM / AB

Notes: Pre-programmed. Engines built BEFORE 09/22/2003.

Year Range: 2003–09/21/2003
Application: F–250 / F–550, Excursion

AP65123

Remanufactured Fuel Injection Control Module (FICM)*

OEM Part Numbers: 4C3Z12B599ABRM / AB

Notes: Pre-programmed. Engines built ON or AFTER 09/22/2003.

Year Range: 09/22/2003–2004
Application: F–250 / F–550
 09/22/2003–
 01/31/2005 Excursion

AP65124

Remanufactured Fuel Injection Control Module (FICM)*

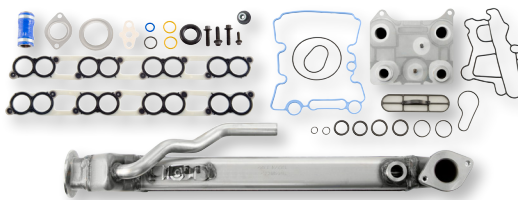
OEM Part Numbers: 4C3Z12B599ABRM / AB

Notes: Pre-programmed.

Year Range: 2005–2007
Application: F–250 / F–550
 02/01/2005–2005 Excursion
 2004–2010 E Series

Engine Components

AP63445



Oil Cooler/Exhaust Gas Recirculation (EGR) Cooler Kit*

Notes: Includes AP63451 Engine Oil Cooler Kit and AP63446 Exhaust Gas Recirculation (EGR) Cooler Kit. Core required only on the Exhaust Gas Recirculation (EGR) Cooler.

Year Range: 2004–2007
Application: F Series, Excursion
 2004–2010 E Series

AP63446



Exhaust Gas Recirculation (EGR) Cooler Kit*

OEM Part Numbers: 4C3Z9P456AF / AC / AH / AJ

Notes: Includes AP63447 Exhaust Gas Recirculation (EGR) Cooler Intake Gasket Kit.

Year Range: 2004–2007
Application: F Series, Excursion
 2004–2010 E Series

**Indicates products with a core charge.*

6.0L and 4.5L POWER STROKE

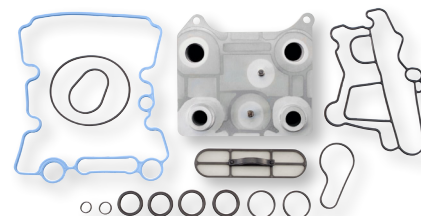
Engine Components *continued*

Engine Oil Cooler Kit

OEM Part Number: 3C3Z6A642CA

Notes: Includes AP0039 Engine Oil Cooler Gasket Kit.

Year Range:	Application:
2003–2007	F Series, Excursion
2004–2010	E Series
2006–2010	4.5L LCF

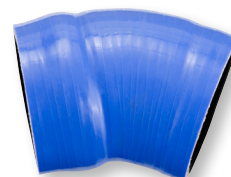


AP63451

Turbo Hose–Short

OEM Part Numbers: 6C3Z6C640C, 6C3Z6C640CA

Year Range:	Application:
2003–2004	F Series, Excursion

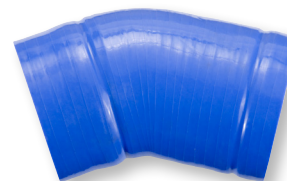


AP63454

Turbo Hose–Long

OEM Part Numbers: 6C3Z6C640A, 6C3Z6C640AA

Year Range:	Application:
2004½–2007	F Series, Excursion

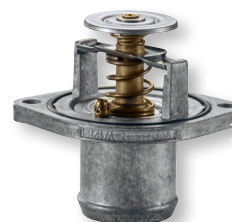


AP63455

Thermostat

OEM Part Numbers: 3C3Z8575AA, RT1169

Year Range:	Application:
2003–2007	F Series
2004–2008	E Series



AP63496

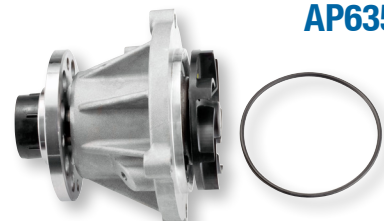
NEW

Water Pump

OEM Part Numbers: 3C3Z8501A, PW480

Notes: Includes mounting gasket. F–650 / F–750 use AP63583 Water Pump Navistar VT365.

Year Range:	Application:
2003–07/19/2004	F–250 / F–550, Excursion
2004–07/19/2004	E Series



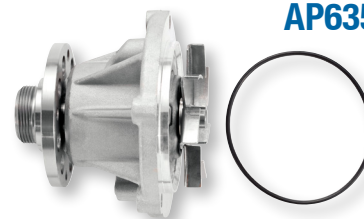
AP63502

Water Pump

OEM Part Numbers: 4C3Z8501AC, PW491

Notes: Includes mounting gasket. F–650 / F–750 use AP63583 Water Pump Navistar VT365.

Year Range:	Application:
07/20/2004–2007	F–250 / F–550, Excursion
07/20/2004–2010	E Series
2006–2010	4.5L LCF



AP63503

6.0L and 4.5L POWER STROKE

Engine Components *continued*

AP63661



Remanufactured High-Pressure Oil Pump*

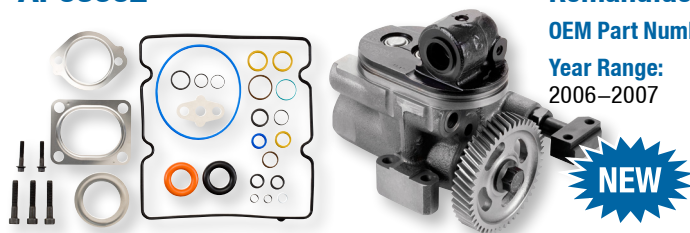
OEM Part Numbers: 5C4Z9A543A / B, 5C3Z9A543C, 5C3Z9A543ARM

Notes: Includes seal kit.

Year Range:
2004½–2007
2004½–2010

Application:
F Series, Excursion
E Series

AP63662



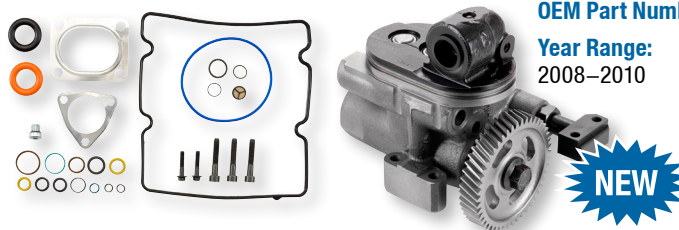
Remanufactured High-Pressure Oil Pump*

OEM Part Number: 6E7Z9A543BRM

Year Range:
2006–2007

Application:
4.5L LCF

AP63663



Remanufactured High-Pressure Oil Pump*

OEM Part Number: 8E7Z9A543CRM

Year Range:
2008–2010

Application:
4.5L LCF

HP032X



Remanufactured High-Pressure Oil Pump (Bosch)

OEM Part Numbers: 3C3Z9A543AARM, 4C3Z9A543AARM

Notes: Includes seal kit.

Year Range:
2003–2004

Application:
F Series, Excursion, E Series

**Indicates products with a core charge.*

6.0L and 4.5L POWER STROKE

Sensors

Engine Speed/Position Sensor

OEM Part Numbers: 3C3Z6C315AA, DY985

Notes: Crankshaft Speed/Position.

Year Range:	Application:
2003–2007	F Series, Excursion
2004–2010	E Series
2006–2010	4.5L LCF



AP63412

Engine Speed/Position Sensor

OEM Part Numbers: 3C3Z12K073AA, 8C3Z12K073A, DU88

Notes: Camshaft Speed/Position.

Year Range:	Application:
2003–2007	F Series, Excursion
2004–2010	E Series
2006–2010	4.5L LCF



AP63415

Ambient Air Temperature (AAT) Sensor

OEM Part Numbers: AE5Z12A647A, DY1137

Year Range:	Application:
2004½–2008	F Series
2006–2008	E Series



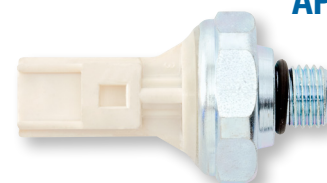
AP63493

NEW

Engine Oil Pressure (EOP) Sensor

OEM Part Numbers: F81Z9278AA, SW5267

Year Range:	Application:
2003–2007	F Series, Excursion
2004–2010	E Series
2006–2010	4.5L LCF

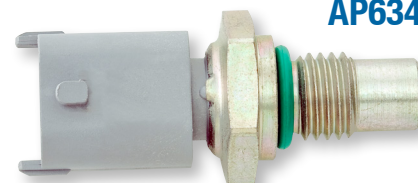


AP63435

Engine Oil/Coolant/Fuel Temperature (EOT/ECT/FT) Sensor

OEM Part Numbers: 3C3Z10884AA, SW6052

Year Range:	Application:
2003–2007	F Series, Excursion
2004–2010	E Series
2006–2010	4.5L LCF

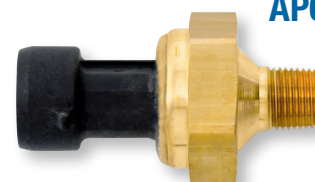


AP63437

Exhaust Back Pressure (EBP) Sensor

OEM Part Numbers: 4C3Z9J460A, DPFE3

Year Range:	Application:	ESN Range:
2003–2004	F Series, Excursion	6,000,000 to 6,344,942
2004	E Series	0 to 149,760

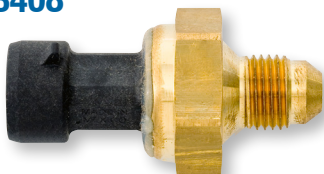


AP63403

6.0L and 4.5L POWER STROKE

Sensors *continued*

AP63408



Exhaust Back Pressure (EBP) Sensor

OEM Part Numbers: 5C3Z9J460A / B, DPFE6

Year Range:

2005–2007
2003–2007
2004–2010

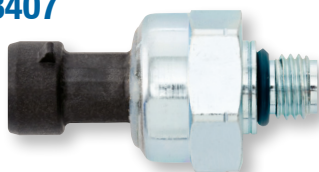
Application:

F–250 / F–550, Excursion
F–650 / F–750
E Series

ESN Range:

6,344,943 to End
149,761 to End

AP63407



Injection Control Pressure (ICP) Sensor

OEM Part Number: 3C3Z9F838EA

Notes: Mounts below turbo.

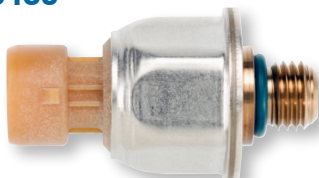
Year Range:

2003–2004

Application:

F Series, Excursion

AP63460



Injection Control Pressure (ICP) Sensor

OEM Part Numbers: 4C3Z9F838A / AB

Notes: Mounts on passenger side valve cover.

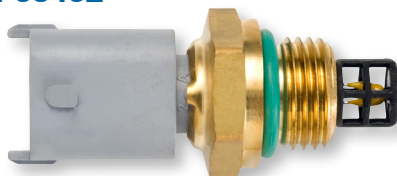
Year Range:

2004–2007
2004–2010
2006–2010

Application:

F Series, Excursion
E Series
4.5L LCF

AP63462



Intake Manifold Air Temperature (IAT) Sensor

OEM Part Numbers: 3C3Z12A697AA, DY984

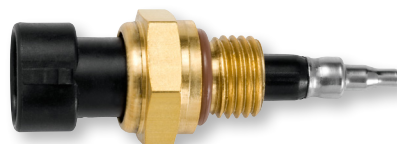
Year Range:

2003–2010
2006

Application:

F Series, Excursion, E Series
4.5L LCF

AP63463



Intake Manifold Air Temperature (IAT) Sensor

OEM Part Numbers: 8C3Z12A697B, DY1112

Year Range:

2007–2010

Application:

4.5L LCF

AP63495



NEW

Manifold Absolute Pressure (MAP) Sensor

OEM Part Numbers: 2L1Z9F479AA, CX1961

Year Range:

2003–2007
2003–2005
2003–2010

Application:

F Series
Excursion
E Series

**Indicates products with a core charge.*

6.0L and 4.5L POWER STROKE

Sensors *continued*

Mass Air Flow (MAF) Sensor*

OEM Part Numbers: 3L3Z12B579ARM, AFLS181RM

Year Range:
2003–2007

Application:
F Series, Excursion

AP63494



NEW

Transmission Fluid Temperature Sensor

OEM Part Number: 3C3Z7H141AA

Year Range:
2003–2007
2004–2010

Application:
F Series
E Series

AP63497



NEW

Actuators

Injection Pressure Regulator (IPR) Valve

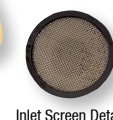
OEM Part Numbers: 3C3Z9C968AA, CM5054

Notes: Without edge filter.

Year Range:
2003–2004

Application:
F Series, Excursion

AP63416



Inlet Screen Detail

Injection Pressure Regulator (IPR) Valve

OEM Part Numbers: 5C3Z9C968CA, CM5126

Notes: With edge filter.

Year Range:
2005–2007
2004–2010
2006–2010

Application:
F Series, Excursion
E Series
4.5L LCF

AP63417



Inlet Screen Detail

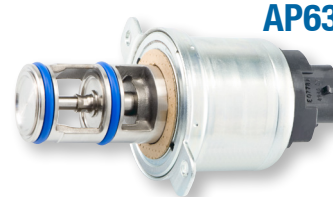
Exhaust Gas Recirculation (EGR) Valve*

OEM Part Numbers: 4C3Z9F452A / ARM, CX2056, CX2467RM

Year Range:
2003–2004

Application:
F Series, Excursion

AP63438



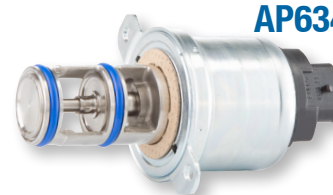
Exhaust Gas Recirculation (EGR) Valve*

OEM Part Numbers: 5C3Z9F452A / ARM, CX2020, CX2466RM

Year Range:
2004½–2007
2004½–2010

Application:
F–250 / F–550, Excursion
E Series

AP63439



6.0L and 4.5L POWER STROKE

Electrical Harness and Repair

AP0021



3 Wire Pigtail

OEM Part Number: 5C3Z12224A

Notes: Fits AP63407 and AP63460 Injection Control Pressure (ICP) Sensors as well as AP63403 and AP63408 Exhaust Back Pressure (EBP) Sensors.

Year Range:

2003–2007
2004–2010
2006–2010

Application:

F Series, Excursion
E Series
4.5L LCF

AP0056



2 Wire Pigtail

Notes: Fits AP63437 Engine Oil/Coolant/Fuel Temperature (EOT/ECT/FT) Sensor.

Year Range:

2003–2007
2004–2010
2006–2010

Application:

F Series, Excursion
E Series
4.5L LCF

AP0030



Injector Harness Connector

Year Range:

2003–2007
2004–2010
2006–2010

Application:

F Series, Excursion
E Series
4.5L LCF

AP0040



G2.8 Injector Connector

Notes: See Technical Bulletin APTB 03/14 for installation instructions.

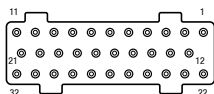
Year Range:

2003–2007
2004–2010
2006–2010

Application:

F Series, Excursion
E Series
4.5L LCF

AP0018



Fuel Injection Control Module (FICM) Connector

Notes: Field data shows identification marks 1456315–6, 1437287–7, or X–3.

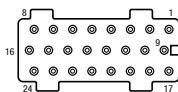
Year Range:

2003–2007
2004–2010
2006–2010

Application:

F Series, Excursion
E Series
4.5L LCF

AP0019



Fuel Injection Control Module (FICM) Connector

Notes: Field data shows identification marks 1456315–2, 1437287–6, or X–2.

Year Range:

2003–2007
2004–2010
2006–2010

Application:

F Series, Excursion
E Series
4.5L LCF

6.0L and 4.5L POWER STROKE

Electrical Harness and Repair *continued*

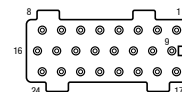
Fuel Injection Control Module (FICM) Connector

Notes: Field data shows identification marks 1456316-1, 1437287-5, or X-1.

Year Range:	Application:
2003-2007	F Series, Excursion
2004-2010	E Series
2006-2010	4.5L LCF



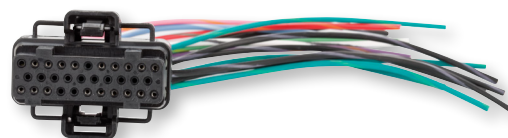
AP0020



Fuel Injection Control Module (FICM) Connector Pigtail

Notes: Replaces AP0018 Fuel Injection Control Module (FICM) Connector. Field data shows identification marks 1456315-6, 1437287-7, or X-3.

Year Range:	Application:
2003-2007	F Series, Excursion
2004-2010	E Series



AP0031

Fuel Injection Control Module (FICM) Connector Pigtail

Notes: Replaces AP0019 Fuel Injection Control Module (FICM) Connector. Field data shows identification marks 1456315-2, 1437287-6, or X-2.

Year Range:	Application:
2003-2007	F Series, Excursion
2004-2010	E Series



AP0032

Fuel Injection Control Module (FICM) Connector Pigtail

Notes: Replaces AP0020 Fuel Injection Control Module (FICM) Connector. Field data shows identification marks 1456316-1, 1437287-5, or X-1.

Year Range:	Application:
2003-2007	F Series, Excursion
2004-2010	E Series



AP0033

2 Wire Pigtail

Notes: Fits AP63416 and AP63417 Injection Pressure Regulator (IPR) Valves and the VGT Solenoid.

Year Range:	Application:
2003-2007	F Series, Excursion
2004-2010	E Series
2006-2010	4.5L LCF



AP0068

6.0L and 4.5L POWER STROKE

Seal and Gasket Kits *continued*

Head Gasket Kit

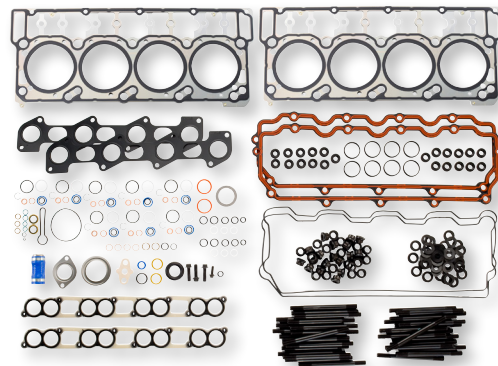
AP0043

Notes: 18 mm dowels.

Year Range:	Application:
2003–2006	F Series, Excursion
2004–2006	E Series

Kit Contents:

- 2 Cylinder Head Gaskets with 18 mm Dowels
- 2 Exhaust Manifold Gaskets
- 2 Rocker Housing Gaskets
- 1 Secondary Fuel Filter Seal Kit
- 4 Fuel Inlet Copper Washers
- 2 Valve Cover Gaskets
- 8 Injector Seal Kits
- 1 Exhaust Gas Recirculation (EGR) Cooler Intake Gasket Kit
- 1 Exhaust Gas Recirculation (EGR) Valve O-ring Kit
- 1 Head Stud Kit
- 2 Stand Pipe and Front Port Plug Seal Kits



Head Gasket Kit

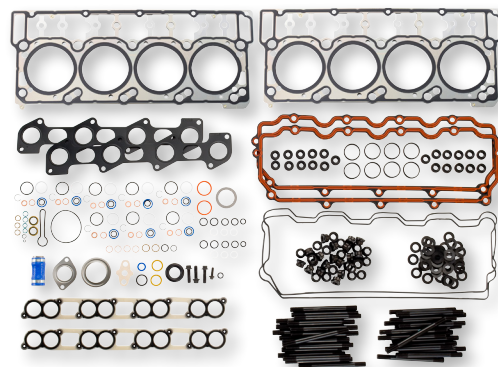
AP0044

Notes: 20 mm dowels.

Year Range:	Application:
2006–2007	F Series, Excursion
2006–2010	E Series

Kit Contents:

- 2 Cylinder Head Gaskets with 20 mm Dowels
- 2 Exhaust Manifold Gaskets
- 2 Rocker Housing Gaskets
- 1 Secondary Fuel Filter Seal Kit
- 4 Fuel Inlet Copper Washers
- 2 Valve Cover Gaskets
- 8 Injector Seal Kits
- 1 Exhaust Gas Recirculation (EGR) Cooler Intake Gasket Kit
- 1 Exhaust Gas Recirculation (EGR) Valve O-ring Kit
- 1 Head Stud Kit
- 2 Stand Pipe and Front Port Plug Seal Kits



High-Pressure Oil Rail Seal Kit

AP0070

Notes: AP0069 High-Pressure Oil Rail Socket required for installation.

Year Range:	Application:
2003–2007	F Series, Excursion
2004–2010	E Series
2006–2010	4.5L LCF

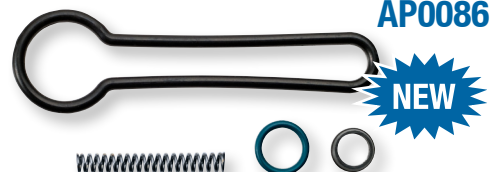


Fuel Pressure Regulator Kit

AP0086

OEM Part Number: 3C3Z9T517AG

Year Range:	Application:
2003–2007	F Series
2004–2010	E Series



6.0L and 4.5L POWER STROKE

Seal and Gasket Kits *continued*

AP63447



Exhaust Gas Recirculation (EGR) Cooler Intake Gasket Kit

OEM Part Numbers: 3C3Z9433BE / BH

Year Range:
2003–2007
2004–2010

Application:
F Series, Excursion
E Series

AP63481



Turbo Installation Kit

OEM Part Number: 3C3Z9T514AG

Year Range:
2004–2007
2004–2010

Application:
F Series, Excursion
E Series

Engine Accessories

AP63430



Fan Clutch

OEM Part Numbers: 4C3Z8A616AA, YB632

Year Range:
2003–2007
2004–2010

Application:
F–250 / F–550, Excursion
E Series

AP63432



Belt Tensioner

OEM Part Number: 3C2Z6B209BA

Notes: Dual alternator configurations.

Year Range:
2003–2007
2004–2010

Application:
F–250 / F–550, Excursion
E Series

AP63448



Belt Tensioner

OEM Part Number: 3C2Z6B209AA

Year Range:
2003–2007
2004–2010

Application:
F–250 / F–550, Excursion
E Series

AP63433



Vacuum Pump–Electronic

OEM Part Numbers: 6C3Z2A451A, 6C3A2A451BA, F81Z2A451BA, 4C3Z2A451BA, BRPV–7

Year Range:
2003–2007

Application:
F–250 / F–550, Excursion

6.0L and 4.5L POWER STROKE

Engine Accessories *continued*

Vacuum Pump—Mechanical

OEM Part Numbers: 4C2Z2A451AA, AC2Z2A451A, BRPV-1 / 11

Year Range: 2004–2010
Application: E Series

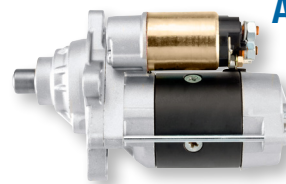


AP63703

Starter

OEM Part Numbers: 3C3Z11002AA, 3C3U11000AB, 6C2Z11002AA

Year Range: 2003–2007
 2004–2010
Application: F-250 / F-550, Excursion
 E Series



AP83006

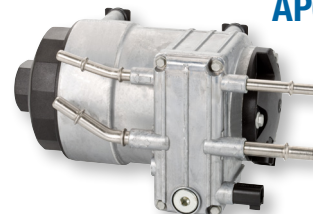
Filters

Horizontal Fuel Conditioning Module (HFCM)

OEM Part Numbers: 3C3Z9C407AB, 6C3Z9C407AA, 6C3Z9G282AA, PFB93, PFB101

Notes: Field data indicates that some vehicles built BEFORE 09/15/2003 may have three plug connections and would require a new wiring harness (6C3Z9F759A) for installation.

Year Range: 2003–2007
Application: F-250 / F-550



AP63426

Vertical Fuel Conditioning Module (VFCM)

OEM Part Numbers: 6C2Z9G282AA, PFB98, 9C2Z9G282A, 6C3Z9G282C

Year Range: 2004–2010
Application: E Series



AP63431

Fuel Filter Housing Cap (Racor)

OEM Part Number: 3C3Z9G270AA

Year Range: 2003–2007
 2004–2010
 2006–2010
Application: F-250 / F-550, Excursion
 E Series
 4.5L LCF



PFF31795

Fuel Filter Element Service Kit (Racor)

OEM Part Number: FD4606

Notes: Primary and secondary.

Year Range: 2004–2010
Application: E Series



PFF4606

6.0L and 4.5L POWER STROKE

Filters continued

PFF4616



Fuel Filter Element Service Kit (Racor)

OEM Part Number: FD4604

Notes: Primary and secondary.

Year Range:

2003–2007
2006–2010

Application:

F–250 / F–550, Excursion
4.5L LCF

PFL2016



Oil Filter Element Service Kit (Racor)

OEM Part Number: FL2016

Year Range:

2003–2007
2004–2010

Application:

F Series, Excursion
E Series

RK31821



Oil Filter Cap (Racor)

OEM Part Number: 3C3Z6766CA

Year Range:

2003–2007
2006–2010

Application:

F Series, Excursion
4.5L LCF

RK32138



Oil Filter Cap (Racor)

OEM Part Number: 4C2Z6766BA

Year Range:

2004–2010

Application:

E Series

6.4L POWER STROKE

Injectors

Remanufactured Piezo Injector*

OEM Part Numbers: 8C3Z9E527A, 8C3Z9E527DRM

Notes: Includes injection line.

Year Range: 2008–2010
Application: F–250 / F–550



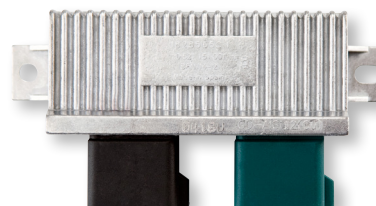
AP64900

Modules

Glow Plug Control Module (GPCM)

OEM Part Numbers: YC3Z12B533AA, DY876

Year Range: 2008–2010
Application: F–250 / F–550



AP63406

Engine Components

Coolant Pump

OEM Part Number: 7C3Z8B552A

Year Range: 2008–2010
Application: F–250 / F–550



AP63472

Exhaust Back Pressure (EBP) Tube

OEM Part Number: 8C3Z9F459A

Year Range: 2008–2010
Application: F–250 / F–550



AP63520



**Indicates products with a core charge.*

6.4L POWER STROKE

Engine Components *continued*

AP63498



Thermostat Kit

OEM Part Numbers: 8C3Z8575D, RT1212

Year Range:
2008–2010

Application:
F–250 / F–550

AP63504



Water Pump

OEM Part Numbers: 8C3Z8501B, PW482

Notes: Includes mounting gasket.

Year Range:
2008–2010

Application:
F–250 / F–550

AP63640



Remanufactured High-Pressure Fuel Pump (HPFP) Kit*

OEM Part Numbers: 8C3Z9A543DRM, 8C3Z9A543B

Notes: Includes pump and installation kit.

Year Range:
2008–2010

Application:
F–250 / F–550

**Indicates products with a core charge.*

6.4L POWER STROKE

Sensors

Engine Speed/Position Sensor

OEM Part Numbers: 3C3Z6C315AA, DY985

Notes: Crankshaft Speed/Position.

Year Range:
2008–2010

Application:
F Series



AP63412

Engine Speed/Position Sensor

OEM Part Numbers: 3C3Z12K073AA, 8C3Z12K073A, DU88

Notes: Camshaft Speed/Position.

Year Range:
2008–2010

Application:
F Series



AP63415

Ambient Air Temperature (AAT) Sensor

OEM Part Numbers: AE5Z12A647A, DY1137

Year Range:
2008–2010

Application:
F–250 / F–550



AP63493

NEW

Fuel Rail Pressure Sensor

OEM Part Number: 8C3Z9G756A

Notes: Includes gasket.

Year Range:
2008–2010

Application:
F Series



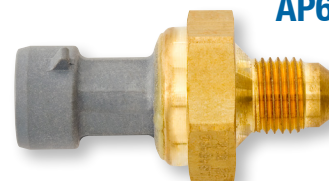
AP63422

Exhaust Back Pressure (EBP) Sensor

OEM Part Numbers: 7E7Z9J460AA, 8C3Z9J460A, DPFE7, DPFE8

Year Range:
2008–2010

Application:
F Series

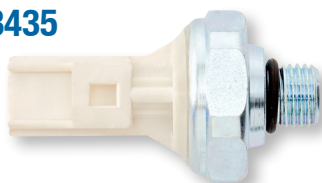


AP63423

6.4L POWER STROKE

Sensors continued

AP63435



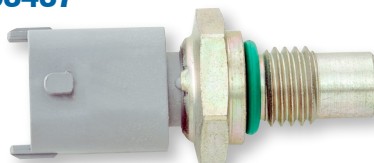
Engine Oil Pressure (EOP) Sensor

OEM Part Numbers: F81Z9278AA, SW5267

Year Range:
2008–2010

Application:
F Series

AP63437



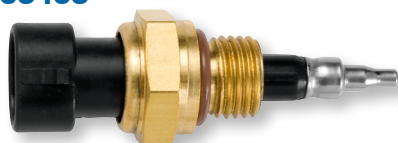
Engine Oil/Coolant/Fuel Temperature (EOT/ECT/FT) Sensor

OEM Part Numbers: 3C3Z10884AA, SW6052

Year Range:
2008–2010

Application:
F Series

AP63463



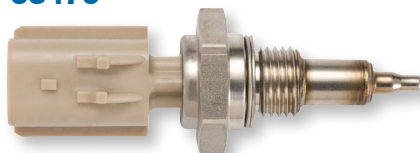
Intake Manifold Air Temperature (IAT) Sensor

OEM Part Numbers: 8C3Z12A697B, DY1112

Year Range:
2008–2010

Application:
F Series

AP63470



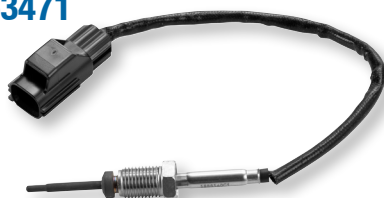
Exhaust Gas Recirculation (EGR) Temperature Sensor–Inlet

OEM Part Number: 8C3Z12B591A

Year Range:
2008–2010

Application:
F Series

AP63471



Exhaust Gas Recirculation (EGR) Temperature Sensor–Outlet

OEM Part Number: 8C3Z12B591E

Year Range:
2008–2010

Application:
F–250 / F–550

AP63473



Diesel Particulate Filter Pressure (DPFP) Sensor

OEM Part Numbers: 8C3Z9J460D, DPFE17

Year Range:
2008–2010

Application:
F–250 / F–550

6.4L POWER STROKE

Sensors *continued*

Mass Air Flow/Intake Manifold Air Temperature (MAF/IAT) Sensor*

OEM Part Numbers: 7C3Z12B579A, AFLS179

Year Range:
2008–2010

Application:
F–250 / F–550



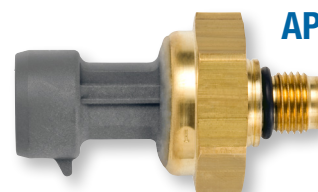
AP63475

Manifold Absolute Pressure (MAP) Sensor

OEM Part Numbers: 8C349F479AA, 8C3Z9F479A, CX2161

Year Range:
2008–2010

Application:
F Series



AP63476

Transmission Fluid Temperature Sensor

OEM Part Number: 9C3Z7H141A

Year Range:
2008–2010

Application:
F Series



AP63497

NEW

Actuators

Exhaust Gas Recirculation (EGR) Valve

OEM Part Number: 8C3Z9D475D

Year Range:
2008–2010

Application:
F Series



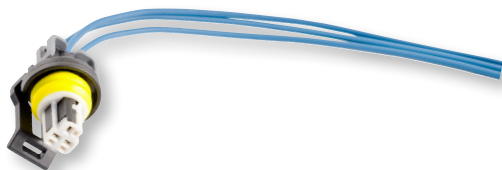
AP63456

**Indicates products with a core charge.*

6.4L POWER STROKE

Electrical Harness and Repair

AP0021



3 Wire Pigtail

OEM Part Number: 5C3Z12224A

Notes: Fits AP63423 Exhaust Back Pressure (EBP) Sensor.

Year Range:
2008–2010

Application:
F Series

AP0056



2 Wire Pigtail

Notes: Fits AP63437 Engine Oil/Coolant/Fuel Temperature (EOT/ECT/FT) Sensor.

Year Range:
2008–2010

Application:
F Series

AP0076



Engine Harness Connector Cover

Year Range:
2008–2010

Application:
F Series

AP63515



Injector Harness

OEM Part Number: 8C3Z9D930AA

Notes: Injector Harness for the right side.

Year Range:
2008–2010

Application:
F–250 / F–550

AP63516



Injector Harness

OEM Part Number: 8C3Z9D930BA

Notes: Injector Harness for the left side.

Year Range:
2008–2010

Application:
F–250 / F–550

Seal and Gasket Kits

AP0027



Injection Line and O-ring Kit

OEM Part Number: 8C3Z9229A

Year Range:
2008–2010

Application:
F Series

6.4L POWER STROKE

Seal and Gasket Kits *continued*

Exhaust Gas Recirculation (EGR) Valve O-ring

OEM Part Number: 8C3Z9D476A

Year Range:
2008–2010

Application:
F Series



AP0042

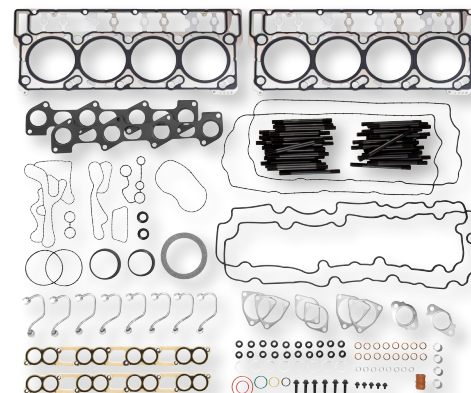
Head Gasket Kit

Year Range:
2008–2010

Application:
F Series

Kit Contents:

- 2 Cylinder Head Gaskets
- 2 Exhaust Manifold Gaskets
- 2 Rocker Housing Gaskets
- 2 Valve Cover Gaskets
- 8 Injector Seal Kits with Injection Lines
- 1 Intake Exhaust Gas Recirculation (EGR) Gasket Kit
- 1 Turbo Gasket Kit
- 1 Oil Cooler Gasket Kit
- 1 Head Stud Kit



AP0064

High-Pressure Fuel Pump (HPFP) Installation Kit

Notes: Installation kit only. If pump is needed see AP63640 Remanufactured High-Pressure Fuel Pump (HPFP) Kit.

Year Range:
2008–2010

Application:
F-250 / F-550



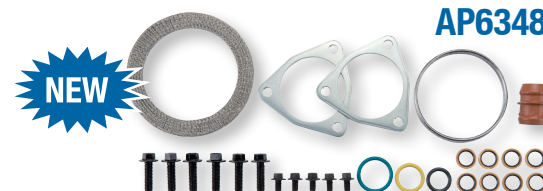
AP0071

Turbo Installation Kit

OEM Part Number: 8C3Z9T514C

Year Range:
2008–2010

Application:
F-250 / F-550



AP63482

6.4L POWER STROKE

Engine Accessories

AP63499



Fan Clutch

OEM Part Numbers: 7C3Z8A616F, YB3125

Notes: Without snow plow package.

Year Range:
2008–2010

Application:
F–250 / F–550

AP63518



Fan Clutch

OEM Part Numbers: 8C3Z8A616S, YB3126

Notes: With snow plow package.

Year Range:
2008–2010

Application:
F–250 / F–550

AP63517



Belt Tensioner

OEM Part Numbers: 7C3Z6B209B, BT91

Notes: Accessory belt tensioner.

Year Range:
2008–2010

Application:
F–250 / F–550

AP63519



Belt Tensioner

OEM Part Numbers: 7C3Z6B209E, BT122

Notes: Primary belt tensioner.

Year Range:
2008–2010

Application:
F–250 / F–550

AP83007



Starter

OEM Part Numbers: 7C3Z11002AA, SA965

Year Range:
2008–2010

Application:
F Series

6.4L POWER STROKE

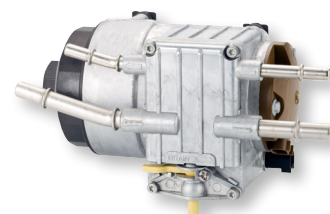
Filters

Horizontal Fuel Conditioning Module (HFCM)

OEM Part Numbers: 8C3Z9G282A, PFB95

Year Range:
2008–2010

Application:
F–250 / F–550



AP63450

Fuel Filter Element Service Kit (Racor)

OEM Part Numbers: FD4609, PFF5550

Notes: Primary and secondary.

Year Range:
2008–2010

Application:
F–250 / F–550



PFF4617

Oil Filter Element Service Kit (Racor)

OEM Part Number: FL2016

Year Range:
2008–2010

Application:
F Series



PFL2016

Oil Filter Cap (Racor)

OEM Part Number: 3C3Z6766CA

Year Range:
2008–2010

Application:
F Series

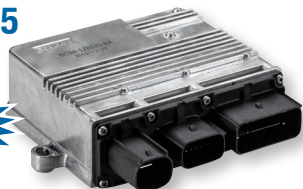


RK31821

6.7L POWER STROKE

Modules

AP63525



Glow Plug Control Unit

OEM Part Numbers: BC3Z12B533A / B, DY1261

Year Range:
2011–2015

Application:
F Series

Fuel System Components

AP63527



Fuel Transfer Pump

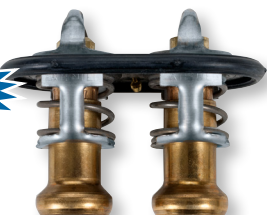
OEM Part Numbers: BC3Z9G282E, PFB103

Year Range:
2012–2015

Application:
F Series

Engine Components

AP63540



Thermostat

OEM Part Numbers: BC3Z8575A / D, RT1205, RT1231

Notes: Main engine thermostat.

Year Range:
2011–2015

Application:
F Series

AP63541



Thermostat

OEM Part Numbers: BC3Z8575B, RT1206

Notes: High temperature right side thermostat.

Year Range:
2011–2015

Application:
F Series

AP63542



Thermostat

OEM Part Numbers: BC3Z8575C, RT1207

Notes: Low temperature left side thermostat.

Year Range:
2011–2015

Application:
F Series

6.7L POWER STROKE

Engine Components *continued*

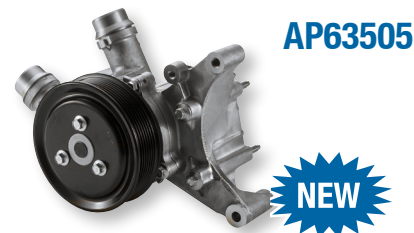
Water Pump

OEM Part Numbers: BC3Z8501B, PW503

Notes: Secondary water pump with dual alternators.

Year Range:
2011–2015

Application:
F Series



Water Pump

OEM Part Numbers: BC3Z8501C, PW504

Notes: Secondary water pump with single alternator.

Year Range:
2011–2015

Application:
F Series



Water Pump

OEM Part Numbers: BC3Z8501A, PW502

Notes: Primary water pump.

Year Range:
2011–2015

Application:
F Series



Sensors

Ambient Air Temperature (AAT) Sensor

OEM Part Numbers: AU5Z12A647B, DY1160

Year Range:
2011–2015

Application:
F Series



Camshaft Position (CMP) Sensor

OEM Part Numbers: BC3Z12K073A, DU92

Year Range:
2011–2015

Application:
F Series



6.7L POWER STROKE

Sensors *continued*

AP63534



NEW

Crankshaft Position (CKP) Sensor

OEM Part Numbers: BC3Z6C315A, DY1148

Year Range:
2011–2015

Application:
F Series

AP63528



NEW

Diesel Particulate Filter Pressure (DPFP) Sensor

OEM Part Numbers: DC3Z9J460D, DPFE24

Year Range:
2013–2015

Application:
F Series

AP63493



NEW

Ambient Air Temperature (AAT) Sensor

OEM Part Numbers: AE5Z12A647A, DY1137

Year Range:
2011–2014

Application:
F Series

AP63539



NEW

Engine Oil Pressure (EOP) Sensor

OEM Part Numbers: 6U5Z9278D, SW6357

Year Range:
2011–2015

Application:
F Series

AP63526



NEW

Exhaust Back Pressure (EBP) Sensor

OEM Part Numbers: BC3Z9J460B / E, DPFE22

Notes: Wide frame chassis, located in the Diesel Particulate Filter (DPF).

Year Range:
2011–2015

Application:
F–350 / F–550

AP63537



NEW

Exhaust Back Pressure/Diesel Particulate Filter Pressure (EBP/DPFP) Sensor

OEM Part Numbers: BC3Z9J460D, DPFE21

Notes: Narrow frame chassis, located in the Diesel Particulate Filter (DPF).

Year Range:
2011–2015

Application:
F Series

6.7L POWER STROKE

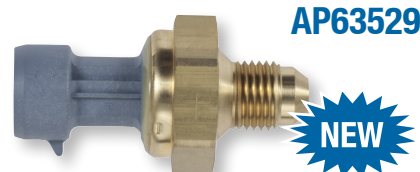
Sensors *continued*

Exhaust Gas Recirculation (EGR) Pressure Sensor

OEM Part Numbers: BC3Z9J460C, DPFE20

Year Range:
2011–2015

Application:
F Series



AP63529

NEW

Intake Air/Charge Air Cooler Temperature (IAT/CACT) Sensor

OEM Part Numbers: 4R8Z12A697A, DY1146

Year Range:
2011–2015

Application:
F Series



AP63544

NEW

Manifold Absolute Pressure (MAP) Sensor

OEM Part Numbers: BC3Z9F479B, CX2432

Year Range:
2011–2015

Application:
F Series



AP63543

NEW

Mass Air Flow (MAF) Sensor*

OEM Part Numbers: BC3Z12B579A, AFLS166

Year Range:
2011–2015

Application:
F Series



AP63524

NEW

Reductant Fluid Level Sensor

OEM Part Number: BC3Z5J225L

Year Range:
2011–2015

Application:
F–250 / F–550



AP63521

NEW

Transmission Fluid Temperature Sensor

OEM Part Number: BC3Z7H141A

Year Range:
2011–2015

Application:
F Series



AP63497

NEW

**Indicates products with a core charge.*

6.7L POWER STROKE

Actuators

AP63522



NEW

Exhaust Gas Recirculation (EGR) Valve

OEM Part Numbers: BC3Z9D475C, CX2404

Notes: Used on narrow frame cab chassis models.

Year Range:
2011–2015

Application:
F–350 / F–550

AP63523



NEW

Exhaust Gas Recirculation (EGR) Valve

OEM Part Numbers: BC3Z9D475D, CX2405

Notes: Used on wide frame pickup chassis models.

Year Range:
2011–2015

Application:
F–250 / F–350

Electrical Harness and Repair

AP0068



2 Wire Pigtail

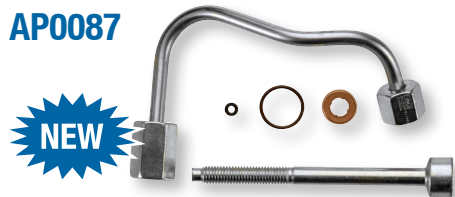
Notes: Fits the VGT Solenoid.

Year Range:
2011–2012

Application:
F–250 / F–550

Seal and Gasket Kits

AP0087



NEW

Injection Line and O-ring Kit

OEM Part Numbers: BC3Z9229A, CM5191

Notes: For cylinders 1, 2, 7, 8.

Year Range:
2011–2015

Application:
F Series

AP0088



NEW

Injection Line and O-ring Kit

OEM Part Numbers: BC3Z9229B, CM5192

Notes: For cylinders 3, 4, 5, 6.

Year Range:
2011–2015

Application:
F Series

6.7L POWER STROKE

Engine Accessories

Alternator*

OEM Part Numbers: BC3Z10346A /D, GL8754, GL992

Notes: Bottom alternator on dual alternator chassis.

Year Range:
2011–2015

Application:
F Series



AP83009

NEW

Alternator*

OEM Part Numbers: BC3Z10346B, GL993

Notes: Single alternator chassis.

Year Range:
2011–2015

Application:
F Series



AP83010

NEW

Alternator*

OEM Part Numbers: BC3Z10346C, GL994

Notes: Top alternator on dual alternator chassis.

Year Range:
2011–2015

Application:
F Series



AP83011

NEW

Belt Tensioner

OEM Part Numbers: BC3Z6B209A / B, BT131

Year Range:
2011–2015

Application:
F Series



AP63538

NEW

Vacuum Pump

OEM Part Numbers: BC3Z2A451A / B, BRPV–8 / 22

Year Range:
2011–2015

Application:
F Series



AP63725

NEW

Fan Clutch

OEM Part Numbers: BC3Z8A616CC, YB3148

Year Range:
2011–2015

Application:
F Series



AP63536

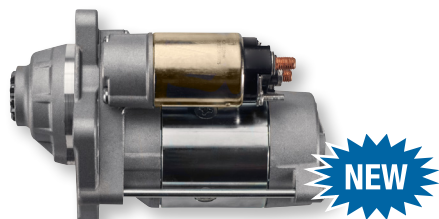
NEW

**Indicates products with a core charge.*

6.7L POWER STROKE

Engine Accessories continued

AP83008



Starter*

OEM Part Numbers: BC3Z11002A, SA1004

Year Range:
2011–2015

Application:
F Series

Filters

AP61004



Fuel Filter Element Service Kit

OEM Part Number: BC3Z9N184B

Notes: Primary and secondary.

Year Range:
2011–2014

Application:
F–250 / F–550

***Visit alliantpower.com
for Additional Information
Such as Technical Bulletins and
New Product Announcements***

**Indicates products with a core charge.*

***Visit alliantpower.com
to Find Your Nearest
Service Dealer***